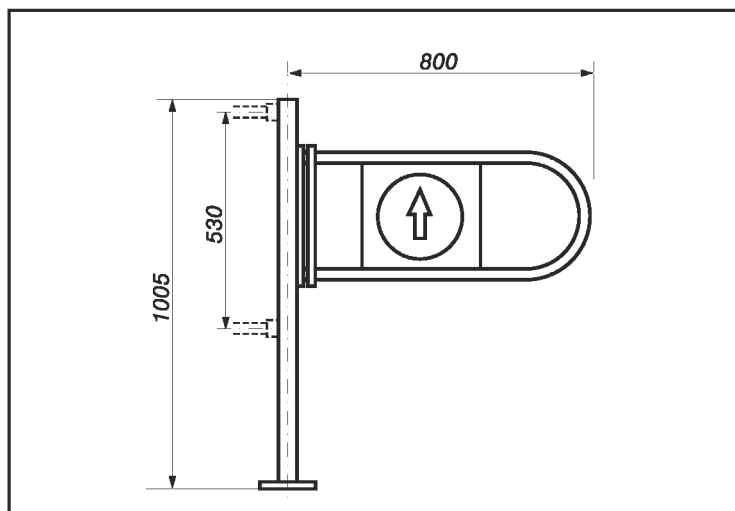


double-sided gate - swinging

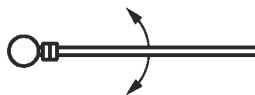
SW 028.000

Mechanical double-sided entrance gate - self-closing. Thanks to the use of a pivot hinge, the gate can be used for entering and exiting a room. It is made of steel, covered with a nickel chrome layer. The gate is intended for use only in enclosed spaces. The gate is mounted to a hardened surface using three screws 08 x 120 and expansion plugs 012 x 100.

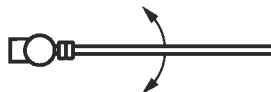
The weight of the gate is 9,5 KG.

**SW 028.000**

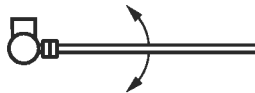
SW 028.000



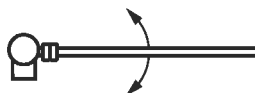
SW 028.001



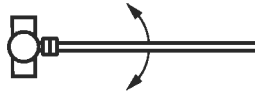
SW 028.002



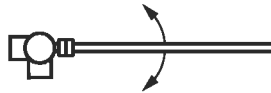
SW 028.003



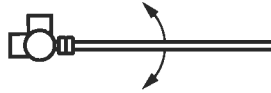
SW 028.004



SW 028.005



SW 028.006



SW 028.007

