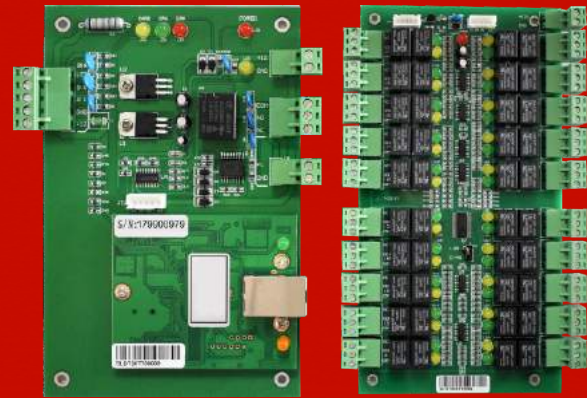


Elevator and Locker Access Control Management software V8.3



Access Control Panel



ACB-DT20

ACB-DT20K

What is Access Control?

Access control for knowledge management, e.g. to an office or warehouse. It is possible to include this in research with specific permissions or to create an access level.

Various types of access control such as web access control, web server access control and stand alone access control. The use of any of the normative standards will improve the level of security.

Specification

Model	ACB-DT20 20-40Floors Elevator Access Control Unit
Input format of reader	Wiegand 26/34bit (All card reader with compatible protocol, such as Motorola, HID, EM, Mifare one etc)
Quantity of users	20,000
Quantity of Event Buffers (offline)	100,000
Power Supply	12V DC 5A
Communication to PC	TCP/IP 10M/100M self adaptive
Number of supported cabinets	20 or 40 depending on controller
Dimensions	164mm*106mm
Net weight	0.3kg / 1.0kg (depending on chosen option)

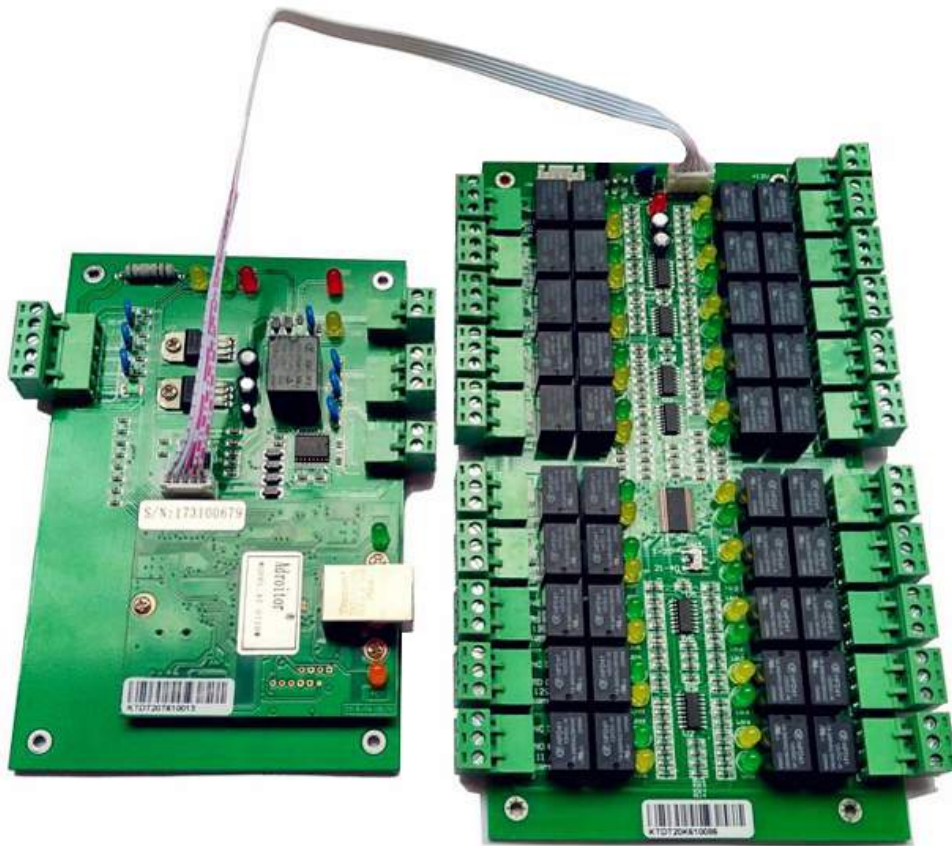
The standard operation of access control is "one-to-one", which means that one card reader controls one door. The door can only be opened with a card with valid authorizations.

Example 1: Locker Access Management

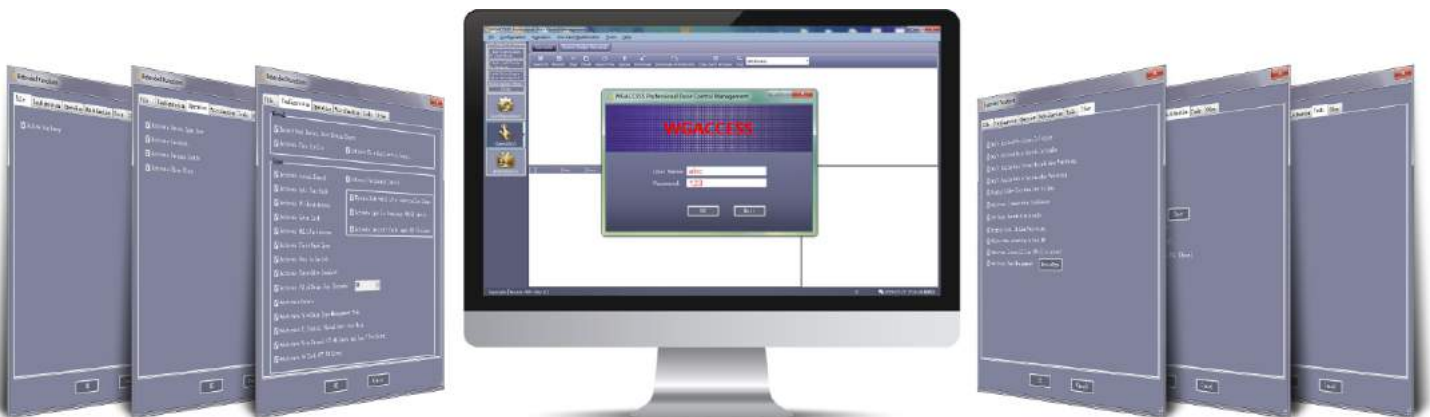
When you have several dozen lockers, it is enough for the user to hold the card against the reader, which then reads the rights assigned to it and opens the appropriate locker.

If the user has the administrator or administrator status, he is able to open any locker depending on the needs (thanks to the appropriate permissions)

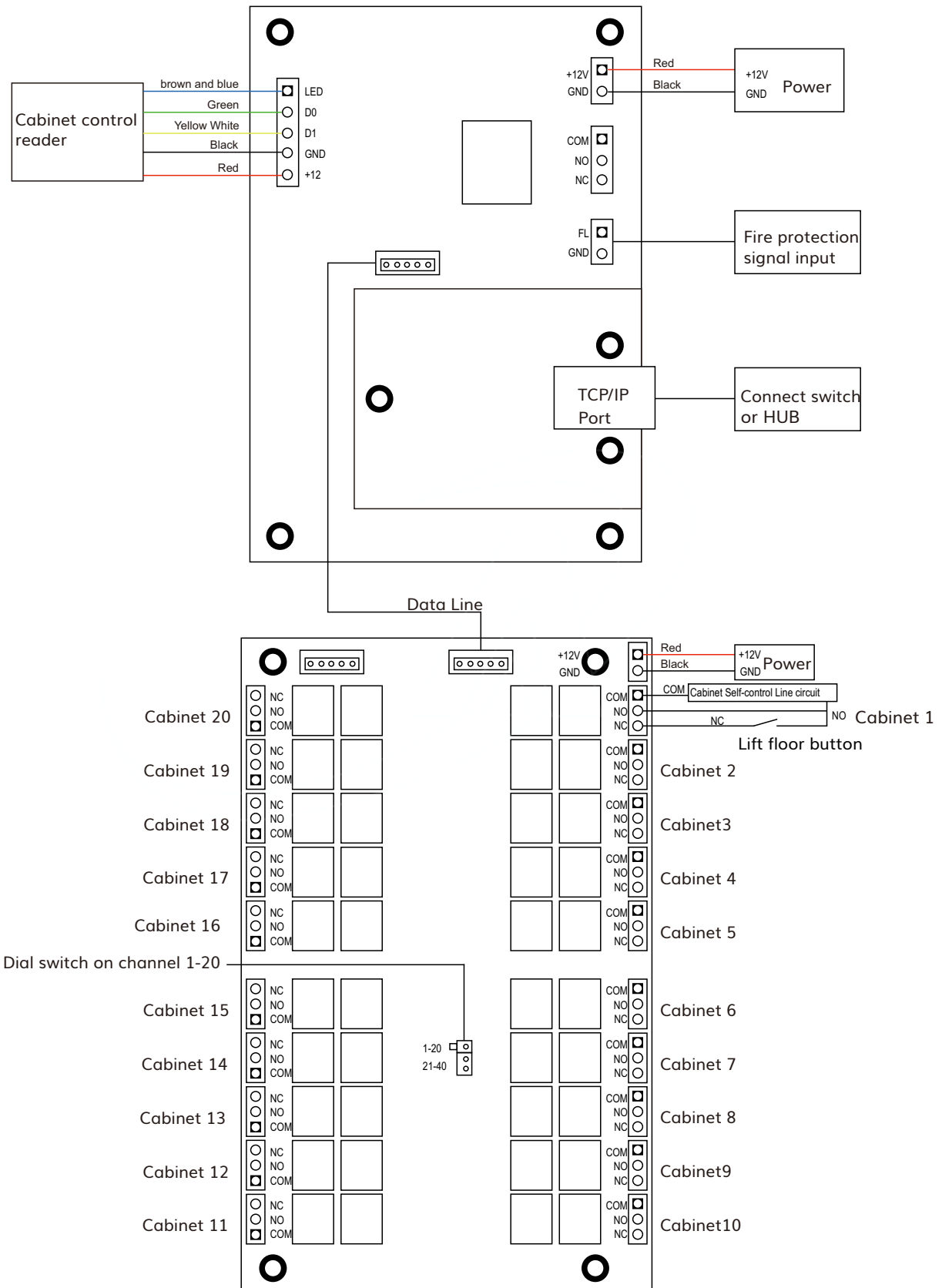
ACB-DT20 + ACB-DT20K



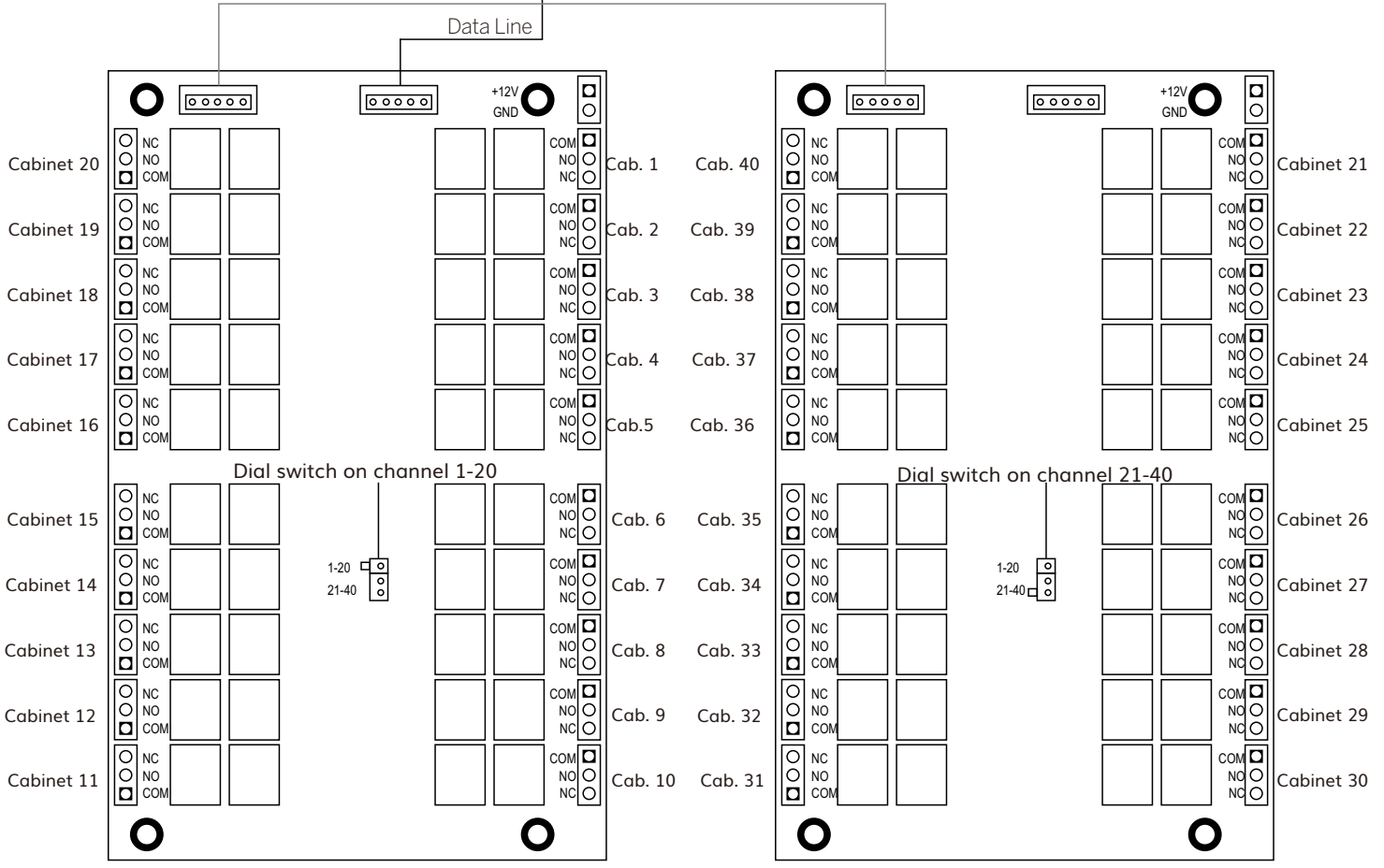
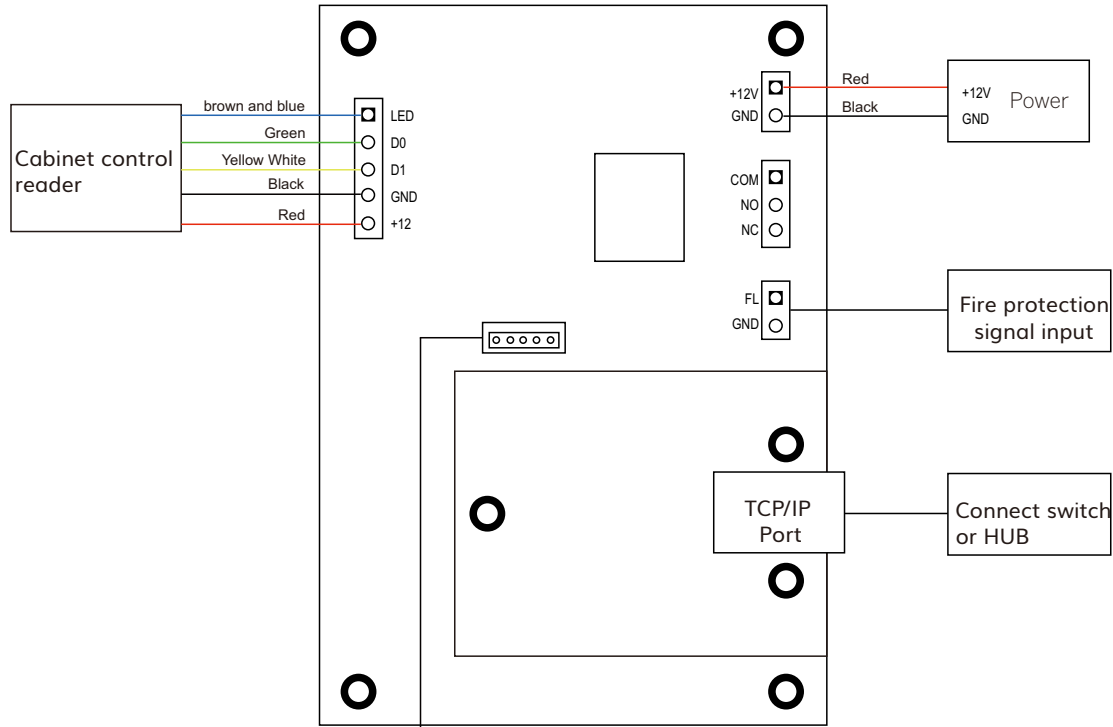
Powerful function for ACB board software



Wiring diagram for 20 cabinet locks



Wiring diagram for 40 cabinet locks



For more information, please contact:
Tel.: +48 784 037 299

Fax: +48 61 624 85 38
www.wano.pl // biuro@wano.pl

