



## Model BU-DS8000

### Cylinder Speed Gate

BU-DS8000 Cylinder Speed Gate is currently the most popular and classic type of swing gate, with four major advantages:

- \*The cylindrical shape has a diameter of only 168mm, which does not require much space and can be installed in any narrow area.
- \*The door is made of a single piece of glass from top to bottom, which makes it very safe and difficult for anyone to jump over or crawl under.
- \*The single door can be made up to 900mm width for wide passageway, wheelchair, and pedestrian with large luggage can also pass.
- \*The two doors work together can support largest 1800mm width, which allows a large group of people to pass through together without waiting and queueing.

## Features

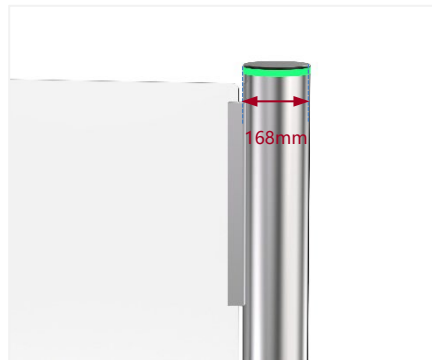
- Two way or one way working.
- Top is made of black tempered glass, support integrated with any type of access control systems.
- Arm width can be 900-1800mm.
- Lower power consumption.
- Low noise, system runs smoothly.
- Blue, Green and red LED indicator display passing status.
- Fire safety requirements, arms open automatically.
- Easy to install and maintain.
- 3 years warranty support.

## Customized Service

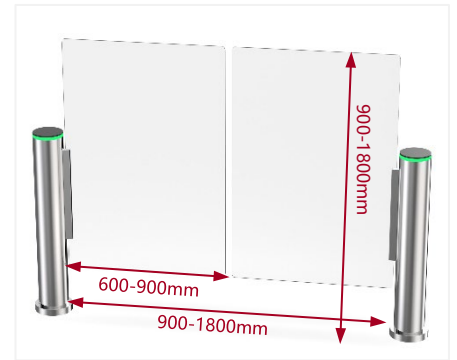
- Appearance color can be customized based on installation environment.
- Dimensions can be customized to meet your request.
- Logo can be customized.
- Arm glass width and height optional.
- Arm material: Plexiglas standard or tempered glass(optional)
- Infrared sensor optional.
- Picture: high resolution and scene picture can be customized.



Logo Custom



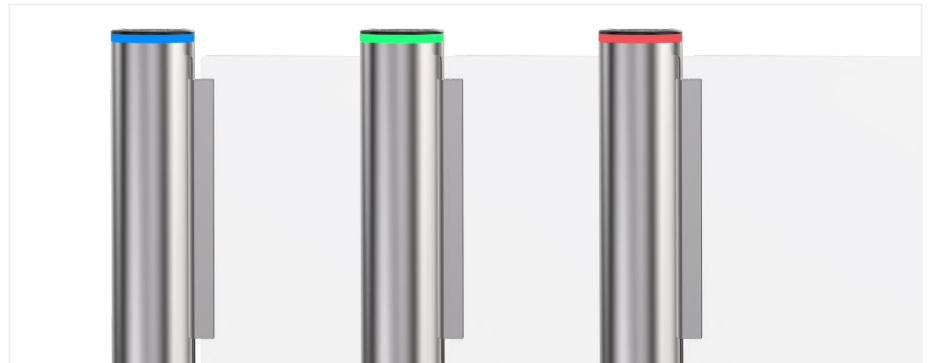
168mm Slim Body



Wide Lane Optional



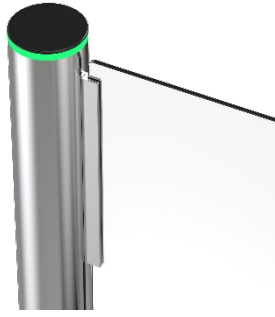
Black Tempered Glass



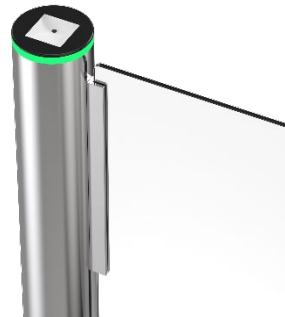
LED Light (blue: normal state; green: passing through; red: invalid card)

## Access Control System

All turnstile gates can be well integrated with any 3<sup>rd</sup> party access control systems



Standard Solution



Card/Qr/Bar Code Solution



Biometric Solution



Remote Control



Touchless Button



Card



QR Code



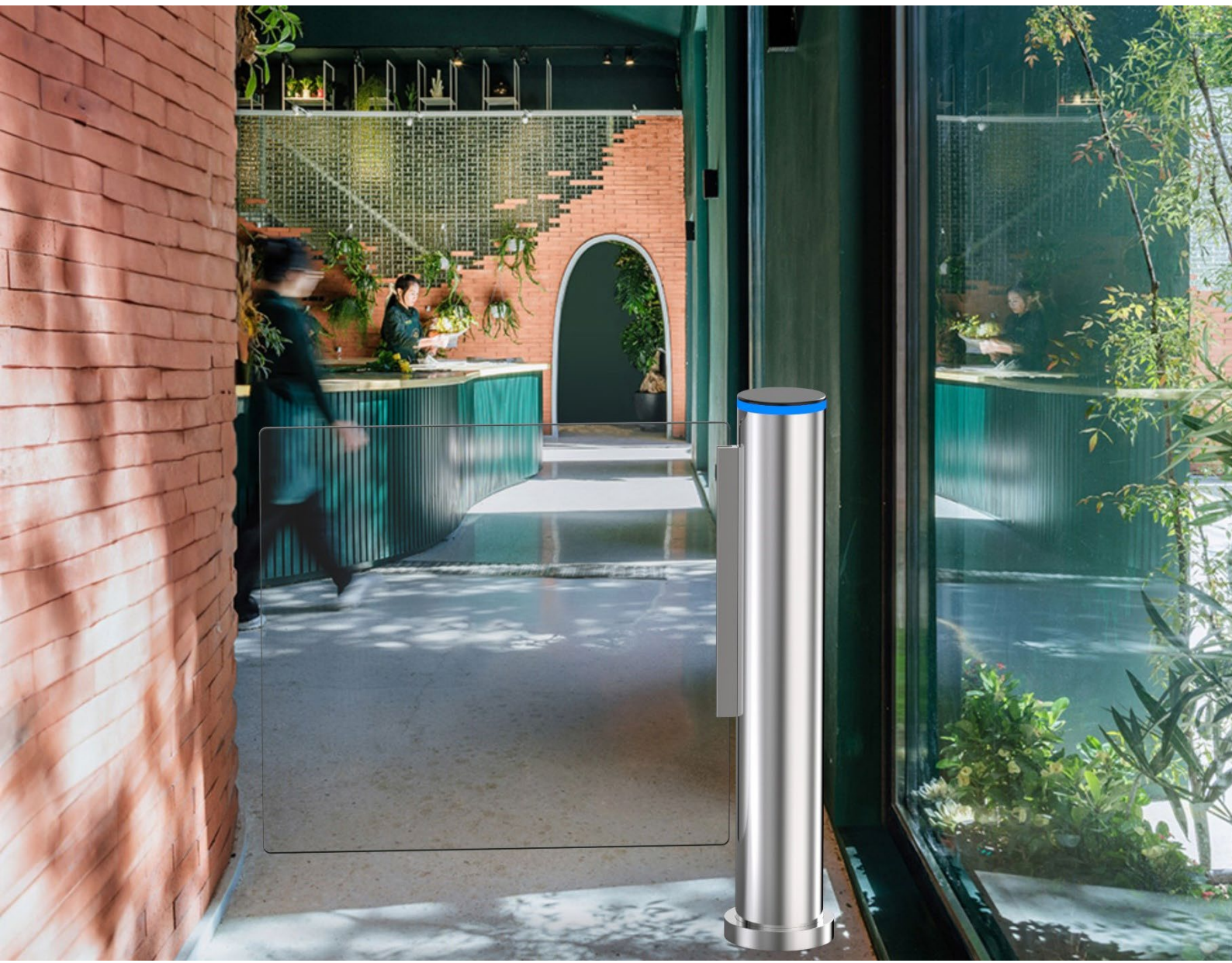
Fingerprint



Face

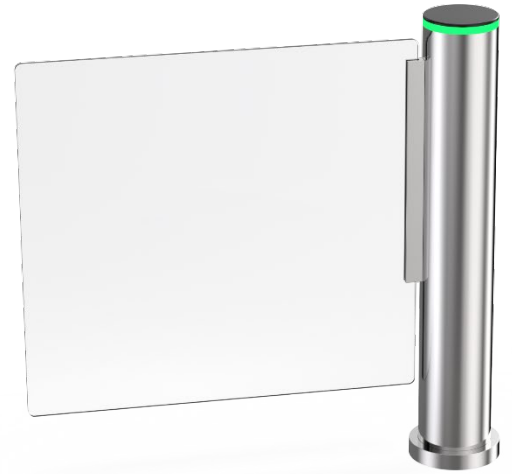


Palm Vein



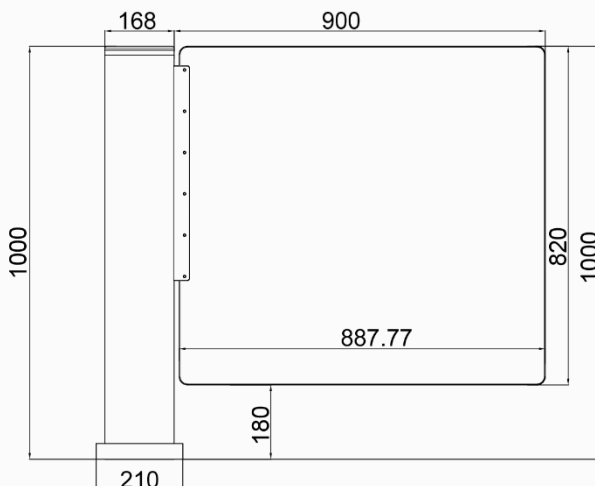
## Specifications

Model No.	BU-DS8000
Type	Cylinder Speed Gate
Flexibility	Integrate with any access control
Framework Material	Cabinet: 304 stainless steel
Arm material	Plexiglas transparency
Dimension	168 * 1000mm
Net Weight	70kg/pcs
Passage Width	600-900mm(one unit) 900-1800mm(two units)
Arm Height	900mm(standard)
MCBF	10 million
Power Supply	AC220V/110V, 50/60Hz
Operation Voltage	24V DC
Power Consumption	40W
Operation Temperature	-15 °C - 60 °C
Operation Humidity	0 ~ 95% (No freeze)
Working Environment	Indoor / Outdoor (shelter)
Flow Rate	35 people per minute
LED Indicator	Yes
Passing Direction	Single directional / Bi-directional
Emergency	Automatic arm open when power off
Communication	Dry contact, Relay signal, RS485



## Dimensions

Front View



Top View

